



CARSELDINE VILLAGE

Inspired living



Different façade options available.

2  2.5  1 

Clever design offering open plan living

NAME: ROMA

Lot size 94m² | House size: 153m²

Located in the heart of Carseldine Village, we welcome you home to the Roma. The Roma terrace design offers a well-designed kitchen, dining, and living area that seamlessly connects to the outdoor alfresco space, fulfilling all your downstairs needs. Upstairs you will discover a MPR, 2 full sized bedrooms with built-in robes and separate bathrooms.

The Roma is the perfect property for the astute first home buyer.

Features include:

- Full turnkey package
- Two split system air-conditioners
- 3.6kW solar system with 10kW battery
- Welcoming porch with screening

Sales Office:

520 Beams Road, Carseldine

1300 647 123

carseldinevillage.com.au

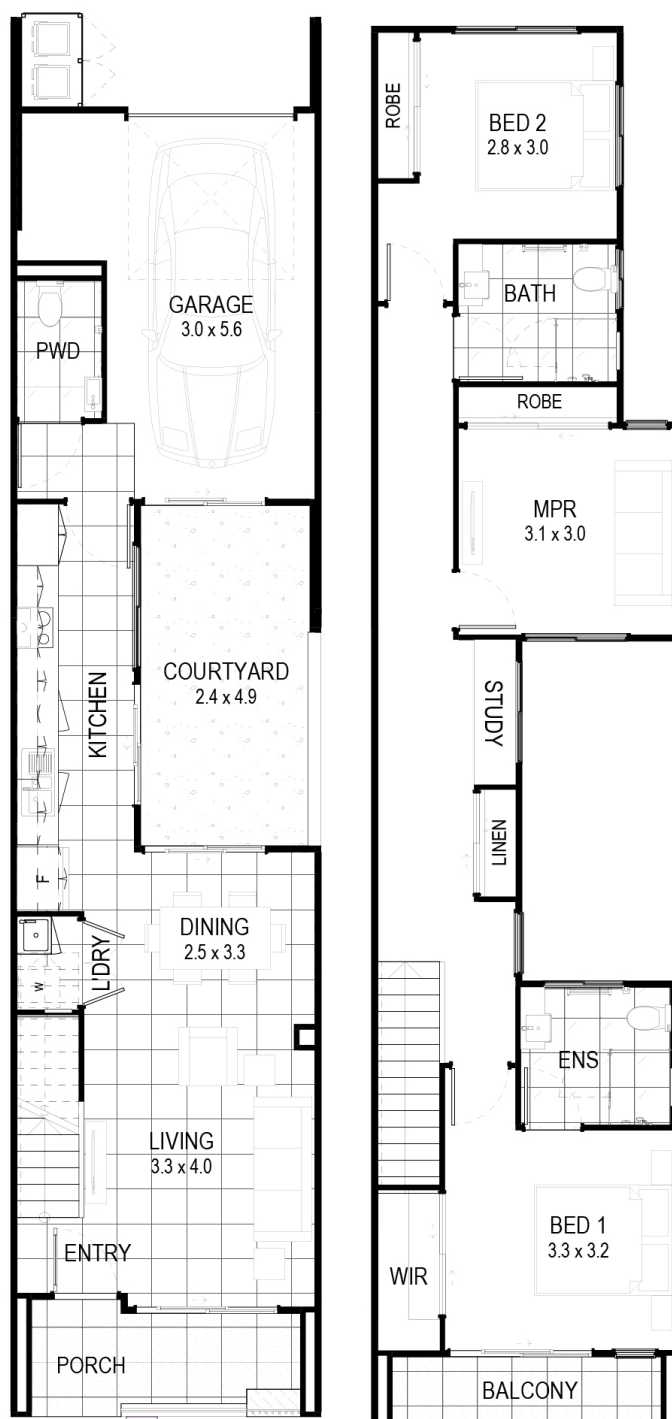
*Price correct at time of publication and is subject to change without notice. See carseldinevillage.com.au for further information. Images are for illustrative purposes only and may not represent final built product.


vantage
HOMESQLD



CARSELDINE VILLAGE

Inspired living



NAME: ROMA

Lot size 94m² | House size: 153m²

Sales Office:

520 Beams Road, Carseldine

1300 647 123

carseldinevillage.com.au

*Price correct at time of publication and is subject to change without notice.
See carseldinevillage.com.au for further information. Images are for illustrative purposes only and may not represent final built product.



Queensland
Government