



CARSELDINE VILLAGE

*Inspired living*



Different façade options available.

2  2.5  1 

## Clever design offering open plan living

NAME: EUKEY

Lot size 76m<sup>2</sup> | House size: 131m<sup>2</sup>

Located in the heart of Carseldine Village, we welcome you home to the Eukey. The Eukey terrace design features a combined kitchen and dining space that flows to the outdoor alfresco, ticking all the boxes downstairs with a separate laundry and a powder room for your guests.

Upstairs you will discover a spacious living room, two full sized bedrooms with built-in robes and separate bathrooms.

The Eukey is the perfect property for the astute first home buyer.

Features include:

- Full turnkey package
- 3.6kW solar system with 10kW battery
- Two split system air-conditioners
- Private, screened alfresco

Sales Office:

520 Beams Road, Carseldine

1300 647 123

[carseldinevillage.com.au](http://carseldinevillage.com.au)

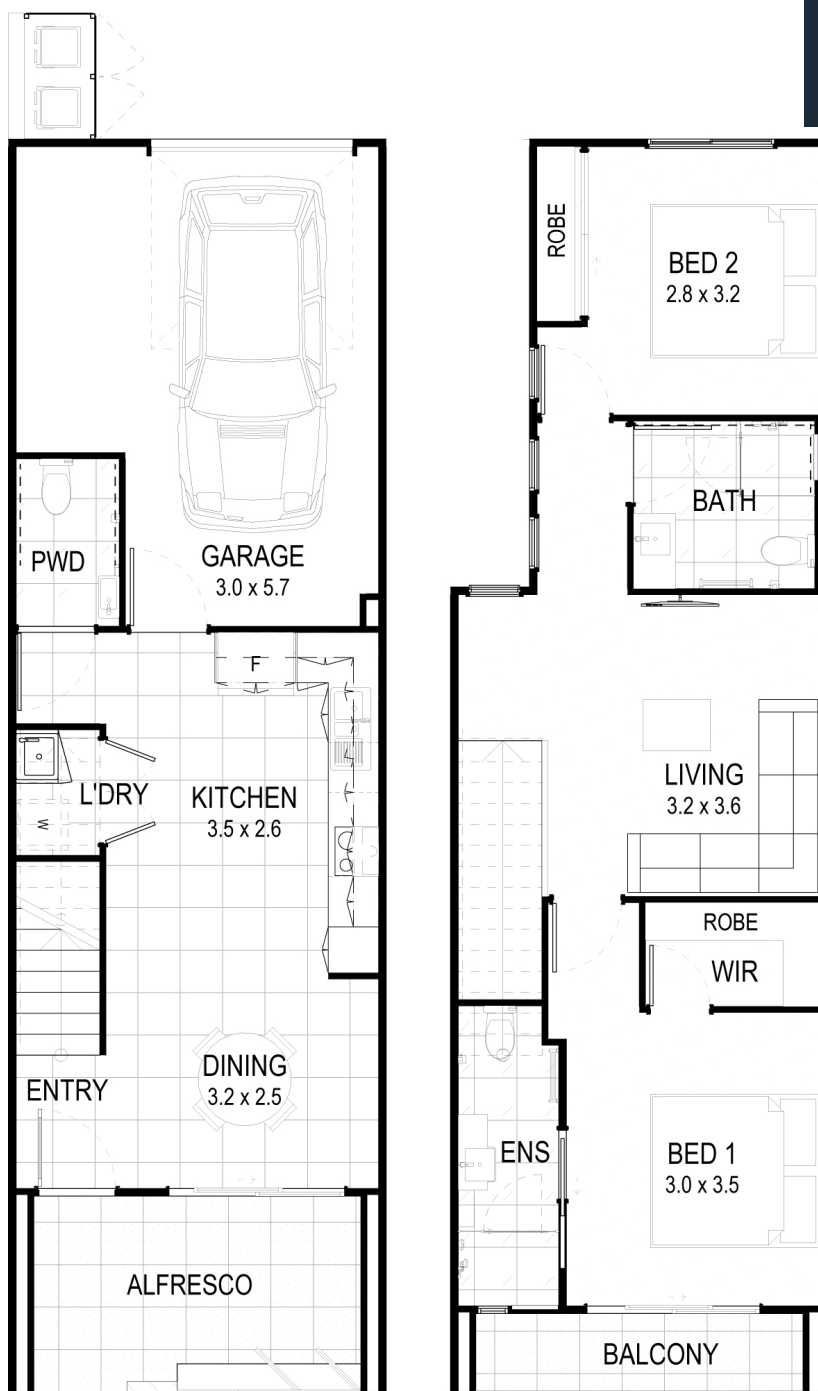
\*Price correct at time of publication and is subject to change without notice. See [carseldinevillage.com.au](http://carseldinevillage.com.au) for further information. Images are for illustrative purposes only and may not represent final built product.

  
**vantage**  
HOMESQLD



CARSELDINE VILLAGE

*Inspired living*



## NAME: EUKEY

Lot size 76m<sup>2</sup> | House size: 131m<sup>2</sup>

Sales Office:

520 Beams Road, Carseldine

1300 647 123

[carseldinevillage.com.au](http://carseldinevillage.com.au)

\*Price correct at time of publication and is subject to change without notice.  
See [carseldinevillage.com.au](http://carseldinevillage.com.au) for further information. Images are for illustrative purposes only and may not represent final built product.



**Queensland**  
Government