

Declaration of PDA-associated development for Waraba Priority Development Area

WAR-2025-1

Description of the land on which the development is proposed to be located:

Part of Lot 2 SP185212, extending westward across unallocated state land (Caboolture River) to the boundary of the Waraba PDA at Lot 4 RP886161.

Attachment 1 displays the land subject to the declaration.

Description of the development:

Rivermont Boulevard Bridge is a two-lane vehicular bridge with a shared path for pedestrians and cyclists. Measuring approximately 15m wide and 140m long and spanning the Caboolture River, the western bridge landing is situated in Lot 4 on RP886161 within the Waraba PDA, and the eastern bridge landing is situated in Lot 2 on SP185212 outside the Waraba PDA.

Landscape works, water supply and sewer infrastructure may be integrated into the Rivermont Boulevard Bridge.

Development may involve material change of use, building work, operational work and reconfiguring a lot.

Attachment 1 display the development concept for the PDA-associated development.

Type of development:

PDA-assessable development.

Declared under section 40C of the *Economic Development Act 2012 (QLD)* by the Minister for Economic Development Queensland in the presence of:

Signature:



Date: 25/08/2025

Julian Simmonds

Acting Chief Executive Officer, Economic Development Queensland

as delegate for the **Minister for Economic Development Queensland**, constituted by section 8 of the *Economic Development Act 2012 (Qld)*

Figure 1: Extent of land for PDA-associated development

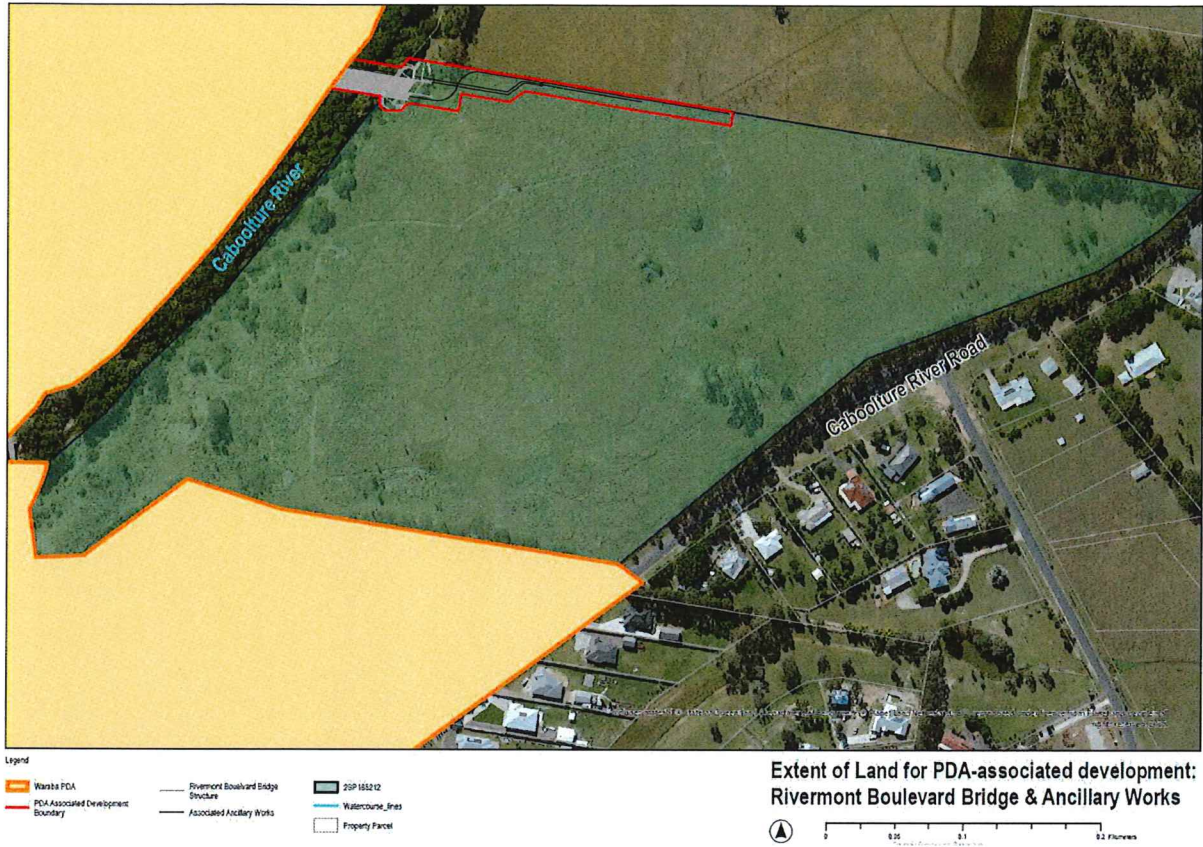


Figure 2: Infrastructure concept for PDA-associated development

