



CARSELDINE VILLAGE

Inspired living

Different façade options available.

3  2.5  2 

Spacious living inside and out

NAME: MILES

Suits lot size 166m² | House size: 191m²

The Miles is an exceptionally comfortable, light-filled abode with modern features throughout. This home design packs a punch with 3 spacious bedrooms, 2.5 bathrooms, flexi space, and 2 car spaces all under one roof that you and your family can call home. By incorporating a Flexi Space on the lower level, complete with an independent entrance, a myriad of possibilities arise for effectively utilising the area.

Enjoy the best Carseldine Village has to offer from this low maintenance home that has been designed with happiness, health and wellbeing in mind.

Features include:

- 3.6 kW solar system with 10kW battery
- Flexi space with independent entrance
- Modern kitchen with stone benchtops
- Feature trellis screen for climbing garden

Sales Office:

520 Beams Road, Carseldine

1300 647 123

carseldinevillage.com.au

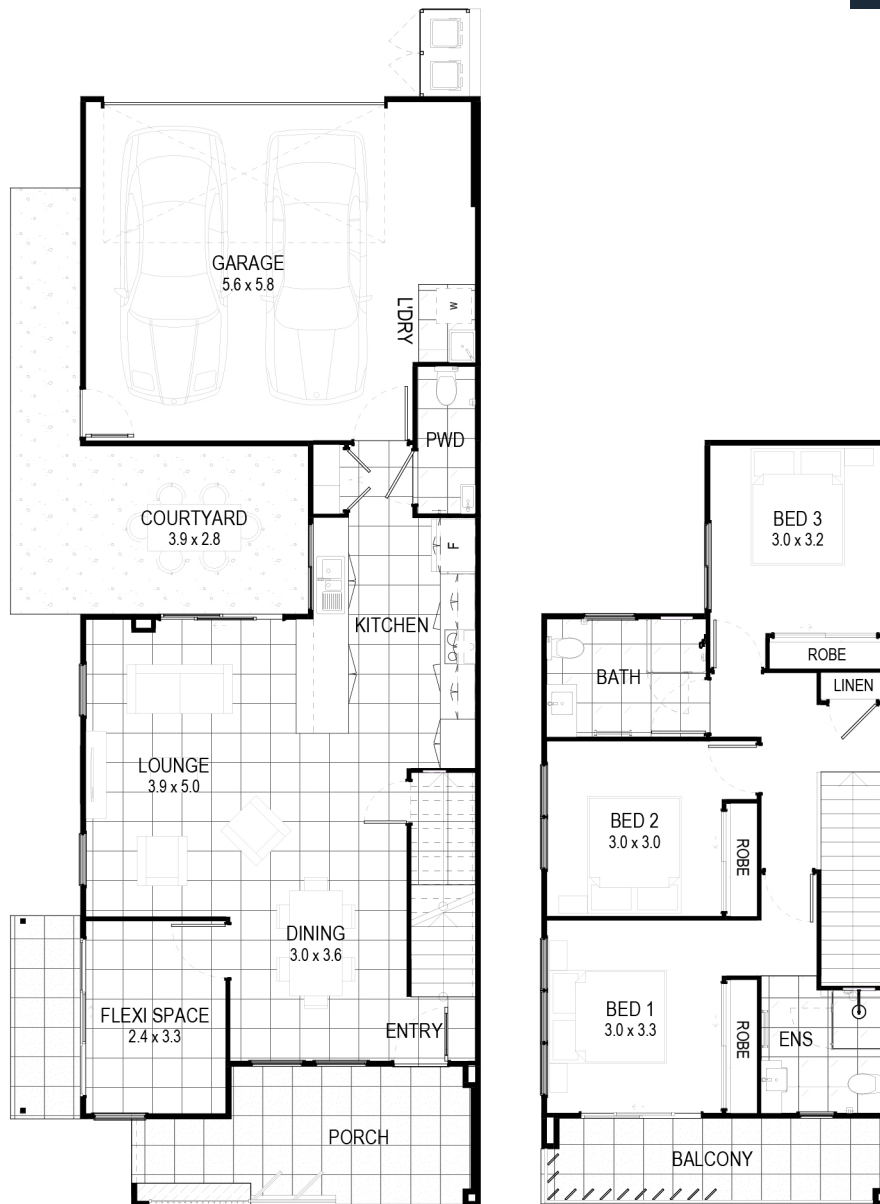
*Price correct at time of publication and is subject to change without notice. See carseldinevillage.com.au for further information. Images are for illustrative purposes only and may not represent final built product.


vantage
HOMESQLD



CARSELDINE VILLAGE

Inspired living



NAME: MILES

Suits lot size 166m² | House size: 191m²

Sales Office:

520 Beams Road, Carseldine

1300 647 123

carseldinevillage.com.au

*Price correct at time of publication and is subject to change without notice.
See carseldinevillage.com.au for further information. Images are for illustrative purposes only and may not represent final built product.



Queensland
Government