



CARSELDINE VILLAGE

*Inspired living*



Different façade options available.

3  2.5  2 

## Live a life of comfort in a sustainably designed home

### NAME: DAFFODIL 3

Suits lot size 109m<sup>2</sup> | House size: 157m<sup>2</sup>

As you ascend to the upper level, you'll find all three bedrooms, along with the main family bathroom, providing a comfortable and private space for rest and relaxation. Meanwhile, the downstairs area is dedicated to ultimate entertainment.

The large open living, kitchen, and dining area seamlessly connect to the alfresco dining space, allowing you to enjoy warm, sunny days with your loved ones. Indulge in the ultimate privacy offered by the master bedroom, complete with a walk-in robe, a luxurious ensuite, and your very own private balcony.

Features include:

- Rooftop 3.6KW Solar Power with battery storage
- Split system air-conditioning to master bed and living room
- European appliances
- Master bedroom with walk-in robe, ensuite and a private balcony

Sales Office:

520 Beams Road, Carseldine

1300 647 123

[carseldinevillage.com.au](http://carseldinevillage.com.au)

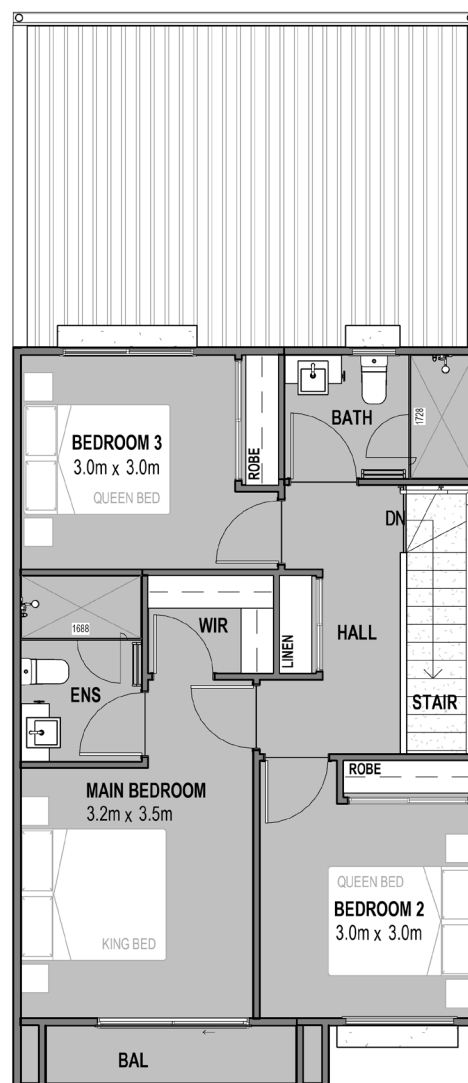
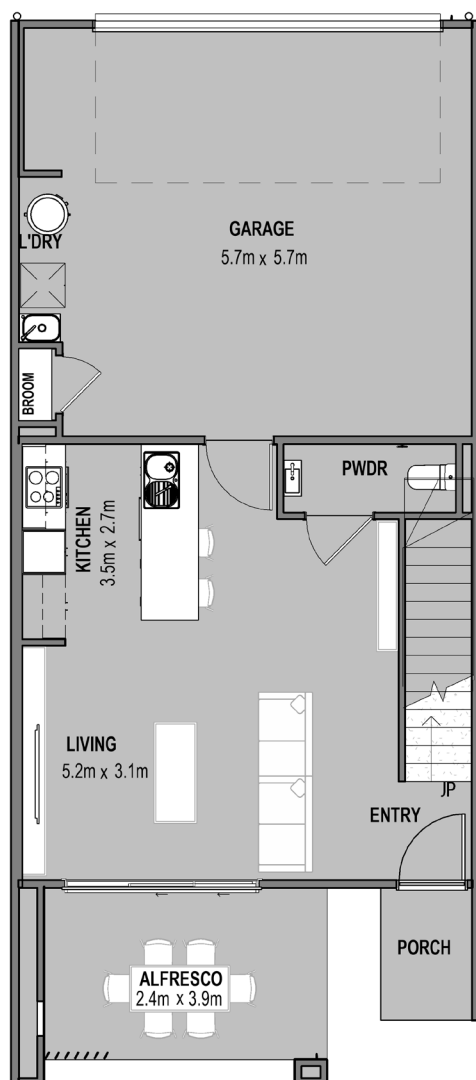
\*Price correct at time of publication and is subject to change without notice. See [carseldinevillage.com.au](http://carseldinevillage.com.au) for further information. Images are for illustrative purposes only and may not represent final built product.





CARSELDINE VILLAGE

*Inspired living*



## NAME: DAFFODIL 3

Suits lot size 109m<sup>2</sup> | House size: 157m<sup>2</sup>

Sales Office:

520 Beams Road, Carseldine

1300 647 123

[carseldinevillage.com.au](http://carseldinevillage.com.au)

\*Price correct at time of publication and is subject to change without notice.  
See [carseldinevillage.com.au](http://carseldinevillage.com.au) for further information. Images are for  
illustrative purposes only and may not represent final built product.



**Queensland**  
Government